

# Lobby Level / Bldg 772

## IN CASE OF FIRE OR EMERGENCY EVACUATION

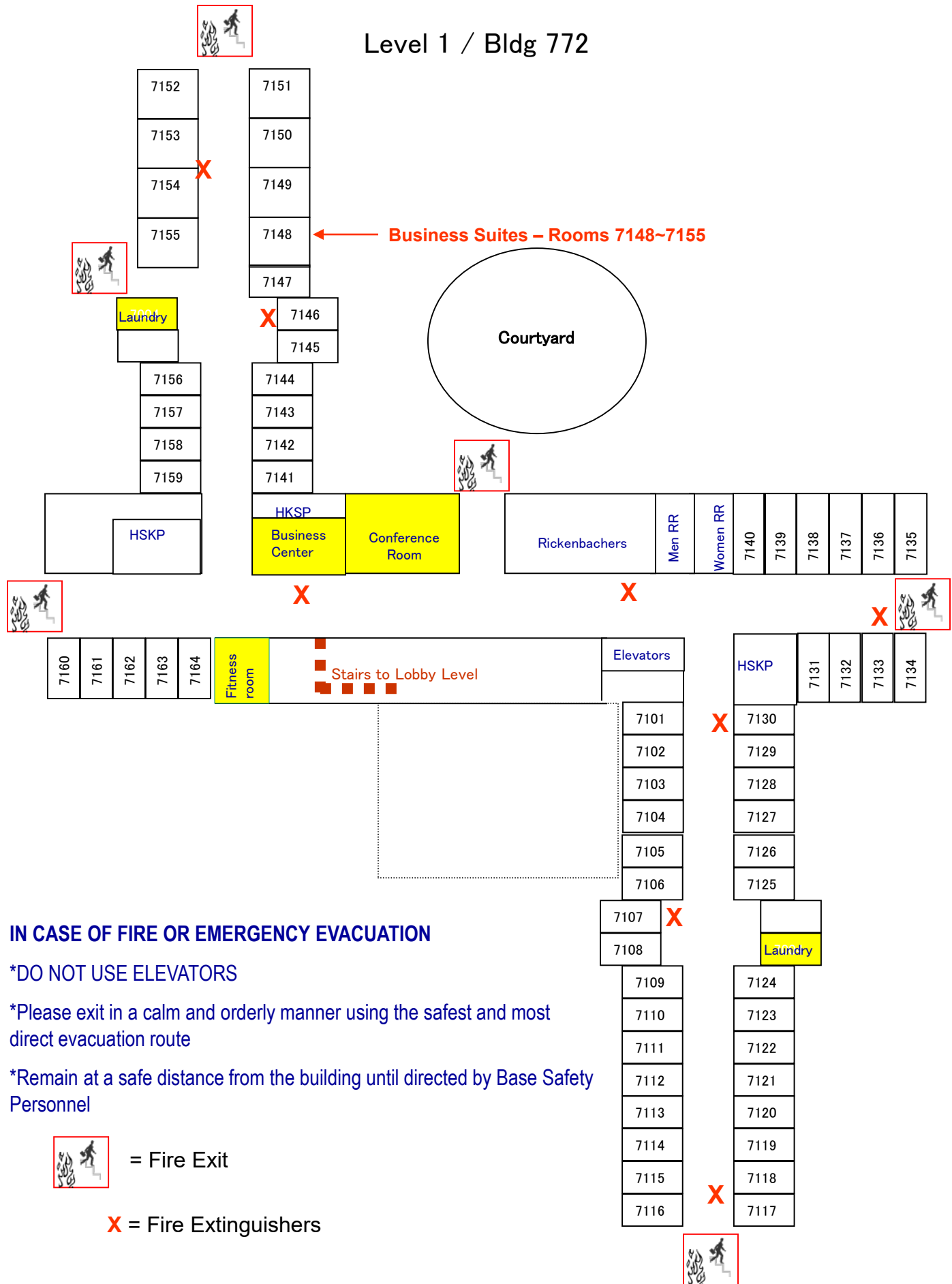
\*DO NOT USE ELEVATORS

\*Please exit in a calm and orderly manner using the safest and most direct evacuation route

\*Remain at a safe distance from the building until directed by Base Safety Personnel



# Level 1 / Bldg 772




## IN CASE OF FIRE OR EMERGENCY EVACUATION

\*DO NOT USE ELEVATORS

\*Please exit in a calm and orderly manner using the safest and most direct evacuation route

\*Remain at a safe distance from the building until directed by Base Safety Personnel

 = Fire Exit

**X** = Fire Extinguishers





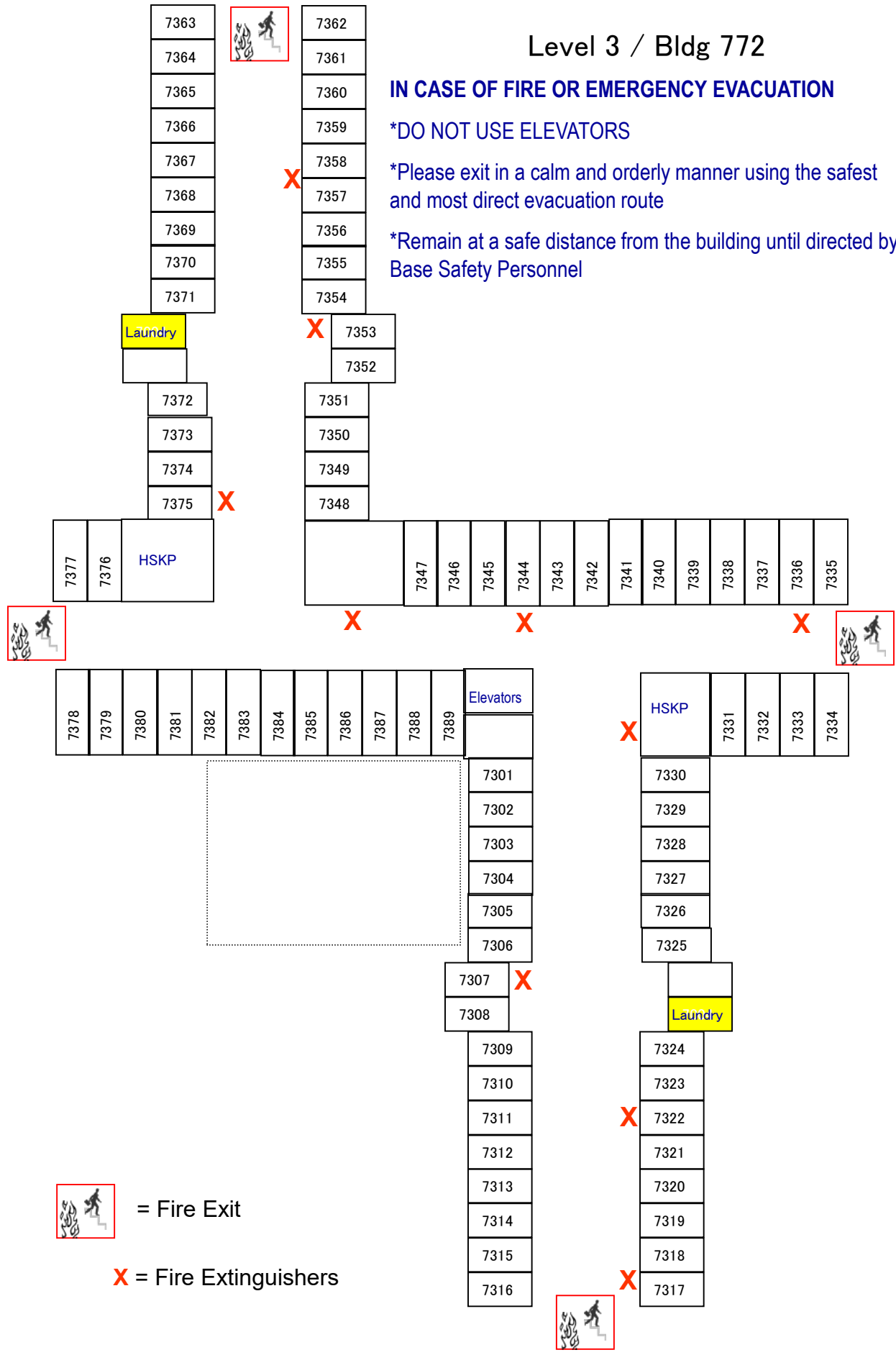
# Level 3 / Bldg 772


## IN CASE OF FIRE OR EMERGENCY EVACUATION

\*DO NOT USE ELEVATORS

\*Please exit in a calm and orderly manner using the safest and most direct evacuation route

\*Remain at a safe distance from the building until directed by Base Safety Personnel



 = Fire Exit

X = Fire Extinguishers

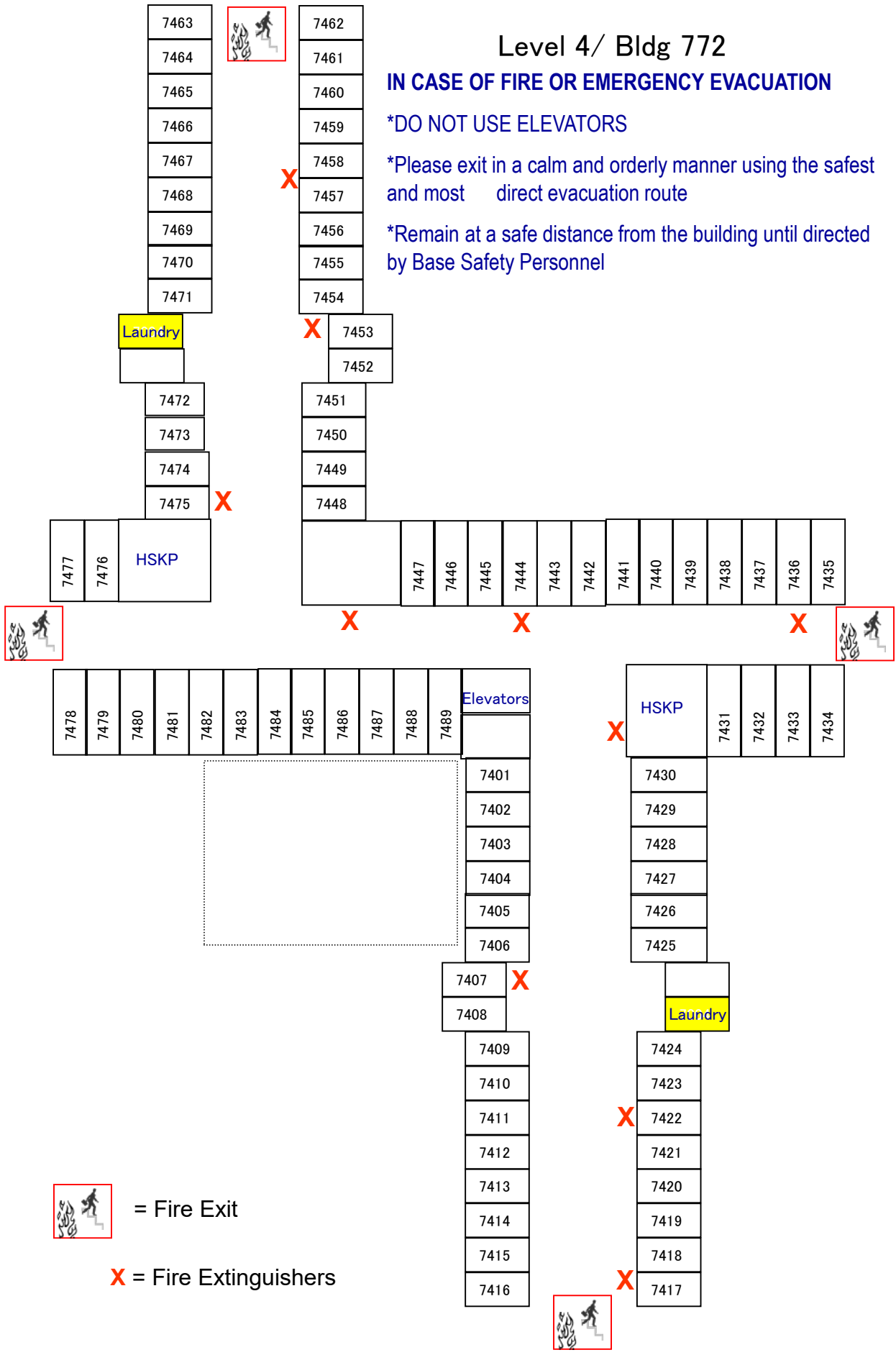
# Level 4/ Bldg 772

## IN CASE OF FIRE OR EMERGENCY EVACUATION

**\*DO NOT USE ELEVATORS**

**\*Please exit in a calm and orderly manner using the safest and most direct evacuation route**

**\*Remain at a safe distance from the building until directed by Base Safety Personnel**



= Fire Exit

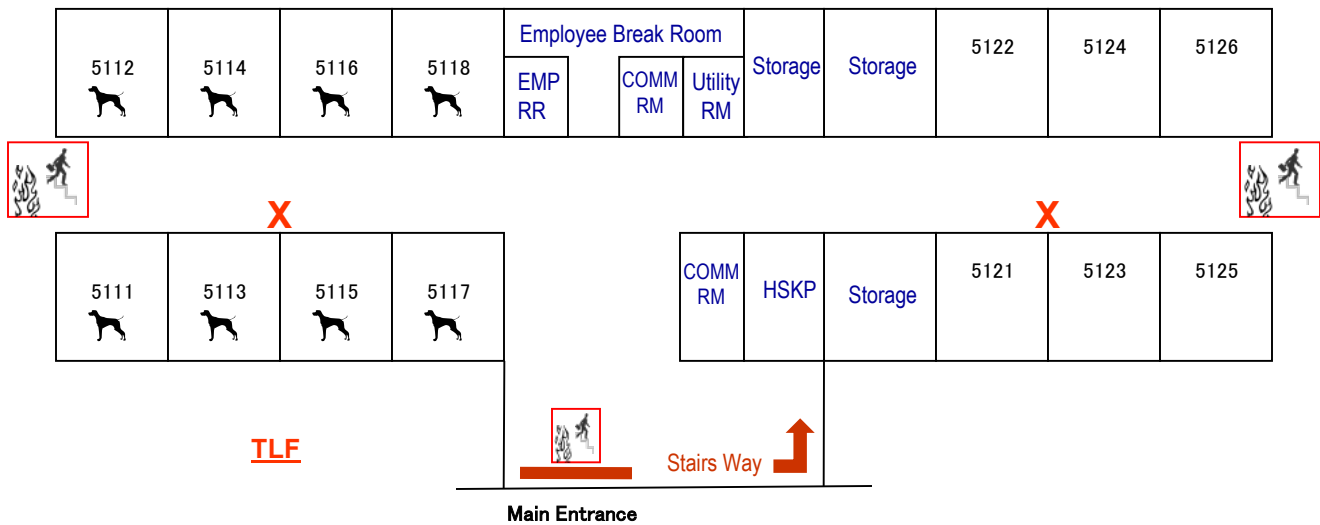
X = Fire Extinguishers

# Level 1 / Bldg 709

## IN CASE OF FIRE OR EMERGENCY EVACUATION

\*Please exit in a calm and orderly manner using the safest and most direct evacuation route

\*Remain at a safe distance from the building until directed by Base Safety Personnel



## PARKING LOT



= Fire Exit



= Fire Extinguishers



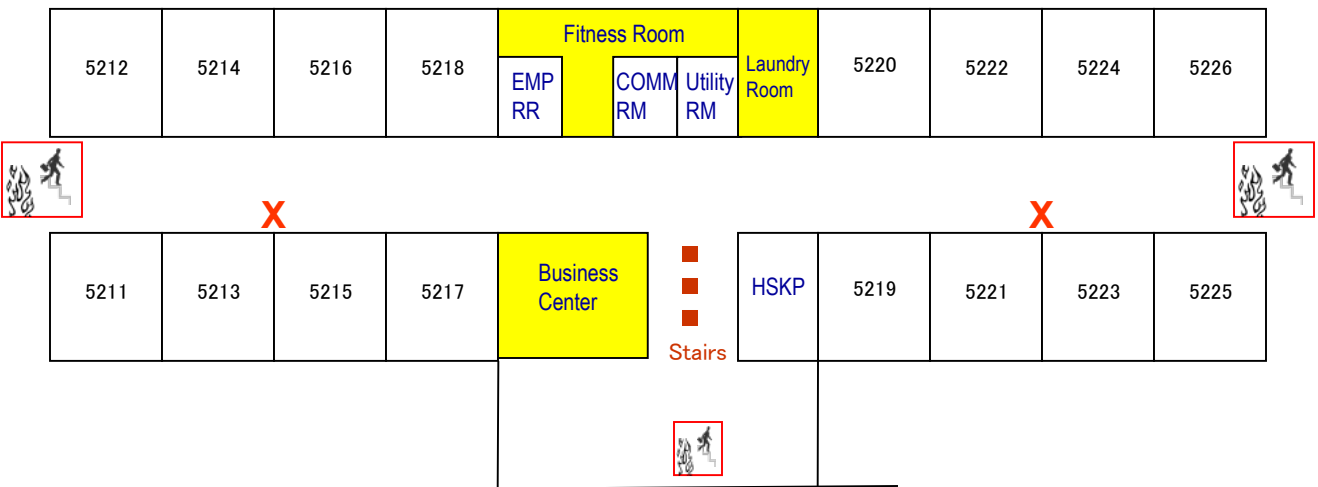
= Pet Rooms: 5111 - 5118

# Level 2 / Bldg 709

## IN CASE OF FIRE OR EMERGENCY EVACUATION

\*Please exit in a calm and orderly manner using the safest and most direct evacuation route

\*Remain at a safe distance from the building until directed by Base Safety Personnel



= Fire Exit

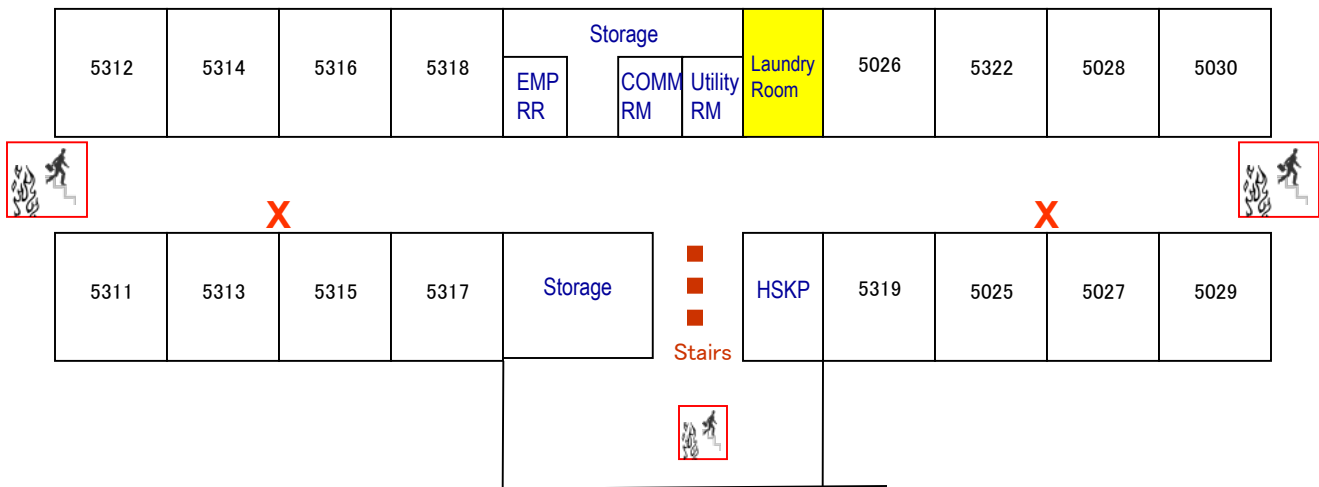
X = Fire Extinguishers


# Level 3 / Bldg 709

## IN CASE OF FIRE OR EMERGENCY EVACUATION

\*Please exit in a calm and orderly manner using the safest and most direct evacuation route

\*Remain at a safe distance from the building until directed by Base Safety Personnel



 = Fire Exit

**X** = Fire Extinguishers